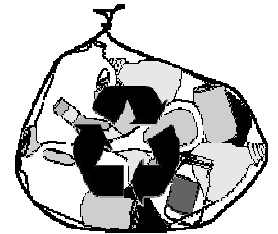




Mr. BINMAN



Opti-Bag Guidelines



Cardboard

i.e. Large Boxes/Cereal boxes/Frozen Pizza Boxes



Plastic Bottles

i.e. Fizzy drinks/water/milk/shampoo/etc.

WASH & SQUASH



Plastic Packaging

i.e. Plastic bags, Yogurt Cartons, Containers,

NO: Aeroboard/Polystyrene



Tetrapaks

i.e. Juice Cartons/Milk Cartons



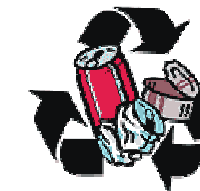
Newspapers & Magazines

i.e. Daily papers, glossy magazines, phone books



Office paper

i.e. Photocopies, paper bags, school books



Cans & Tins

i.e. Drinks Cans, Tinned Food Cans, Biscuit Tins



WASH & SQUASH

Do not include Glass, Food, Ashes, Sanitary Waste, Grass, Clothes or Textiles.



Please note: the recycling symbol does not mean it should automatically go in the bag, it only means that the company producing the package has contributed to a recycling fund.